

GPS Tracker Software Platform User Manual

Content

I. Preparation.....	1
II. Manual track on google earth.....	1
III. Track on PDA & cell phone.....	1
IV. Get location in real street/address name by cell phone.....	2
V. Track on Web-based Monitor Center by GPRS.....	2

I. Preparation

Load a GSM SIM card into the tracker and subscribe the GPRS service. Please make sure that the SIM card is able to execute the function of incoming calls display, no calls can be diverted and the PIN code is locked. And switch the tracker on.

II. Manual track on Google Earth

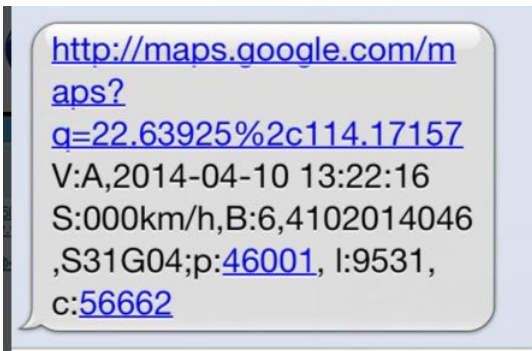
2.1 Dial the SIM card number in tracker, it will hang up and reply a SMS with http link and real-time latitude and longitude automatically.



Google_Earth_CZXV

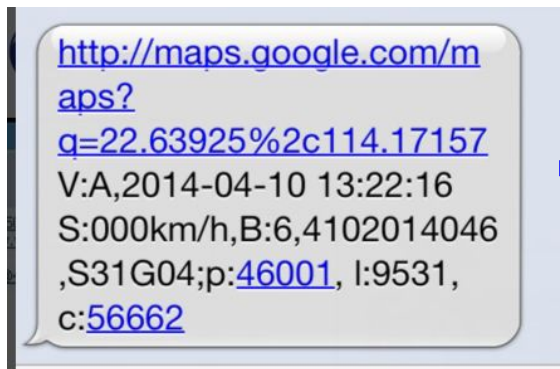
2.2. Install the software

i



III. Track on PDA & cell phone

3.1 The SMS received from tracker including an http link, enter the link through your PDA or cell phone to get the detailed position anywhere and anytime. As shown below:



3.2. PDA or cell phone for this function must support pictures viewing and internet capability.

IV. Track on Web-based Monitor Center by GPRS

4.1. The default APN, IP & Port (Default APN is CMNET; IP is 60.191.150.102; port is:7700)

4.2. Obtain IMEI Number



Platform : <http://www.tkstargps.net/>

IMEI No. : In the back side of cover

Password: 123456

4.3. APN Configuration

4.3.1. APN standards for Access Point Name and differs from country to country. For more information about the local APN, inquire with your local GPRS network operator.

4.3.2. Text the tracker a SMS “APN123456 + Space +APN of your local GSM net operator” via a cell phone after obtaining your correct APN, and if succeeded in setup, the tracker will return the message “APN OK”

e.g. send SMS command “apn123456 cmnet” to tracker device, If succeeded, “APN OK” is returned by the tracker in SMS.

Notes: 123456 refers to password of tracker and CMNET is the APN of China Mobile (One of GSM network operator in china).

For example

if you use the Claro SIM card

1. apn123456 claro.com.br
2. apnuser123456 claro
3. apnpasswd123456 claro

4.5. IP Address and Port Setup (Default is IP is 60.191.150.102; port is:7700 ,no need to set the apn and port use our tkstar Software Platform)

4.5.1 Send SMS as below via a cell phone: adminip+123456+Space+IP Address+Space+Port Number. The configuration for all subscribers in our web-server monitor center should with our unique IP and port. IP is: 60.191.150.102 **port is: 7700**. So the SMS command sent by cell phone as following: “adminip123456 202.104.150.75 9000” If configuration goes smoothly, the tracker returns "adminip OK"

4.6 Modes switch between “GPRS” and “NOGPRS” (Default is GPRS ,no need to set the GPRS use our tkstar Software Platform)

4.6.1 Send SMS “GPRS+password” to the unit, and it will reply “GPRS ok!” and switch to “GPRS” mode.

4.6.2 Send SMS “Nogprs+password” to the unit, it will reply “Nogprs ok!” and switch to “Nogprs” mode.

4.7 Sleep mode conversion, select dormancy mode according to the actual usage

Sleep model (Factory Default Sleep by time)

Sleep by time (default mode-save much power,tracker will fall asleep in 5 minutes)

Command	Reply
sleep+123456+space+time	sleep time ok

Sleep by shock sensor (Suits for vehicle tracking on platform,tracker will enter sleep mode after detect no shock in 5 minutes)

Command	Reply
sleep+123456+space+shock	sleep shock ok

No Sleep (Equipment has been work, power consumption is bigger if you don't need continuous positioning, this mode is not recommended)

Command	Reply
nosleep+123456	nosleep ok

4.8. Sign up user IMEI and password (Default password is 123456)

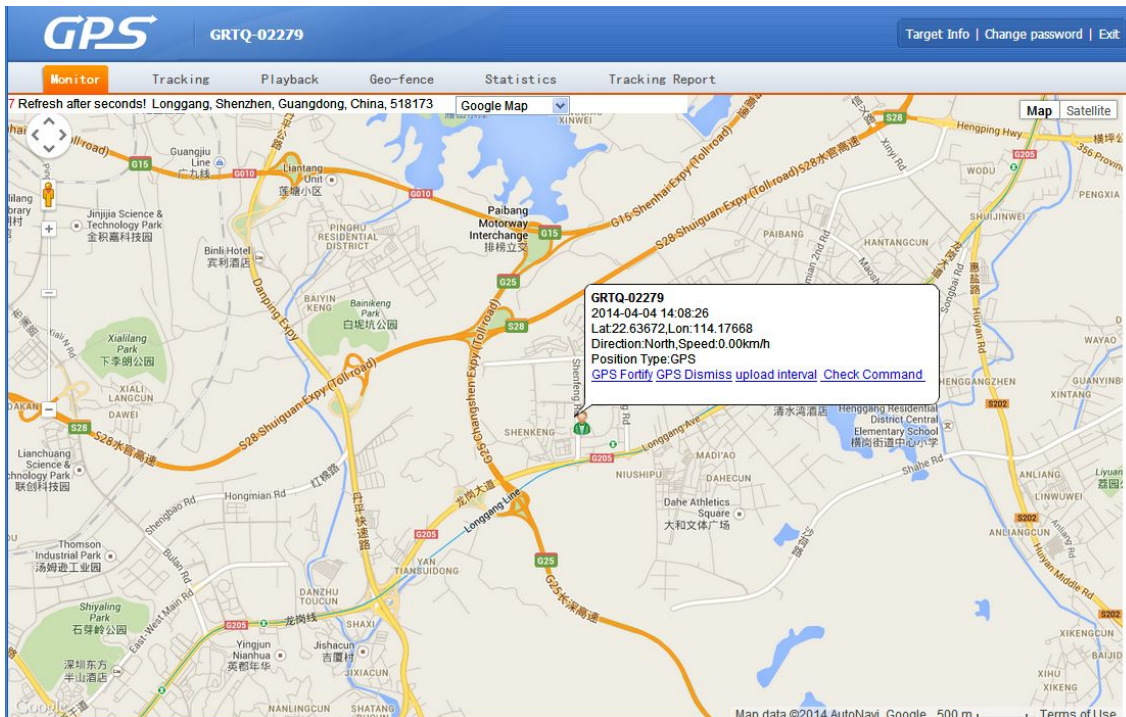


Platform : <http://www.tkstargps.net/>

IMEI No. : In the back side of cover

Password: 123456

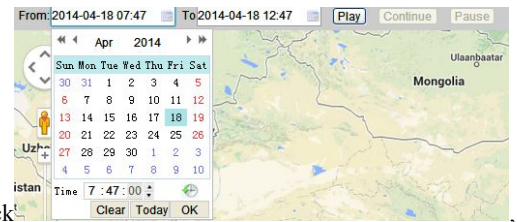
4.9. Control command operation



4.9.2 Real time tracking, please click

[Tracking](#)

4.9.3 Setting intervals, please click [upload interval](#). (Default is 120s)



4.9.4 Trace Playback, please click [Playback](#), select the time period you want to check, click search and then click play.

4.9.5 Alarm and tracking history, please click [Statistics](#)

4.9.6. Account password modification, please click [Change password](#)

4.9.7. Edit account information, please click [Target Info](#)

4.9.8. The query issued instructions, please click [Check Command](#)

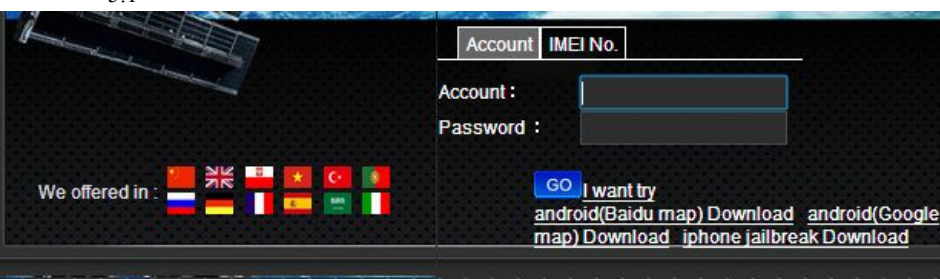
4.9.9. Setting GEO-fence, please click [Geo-fence](#) (Electronic fence alarm, if there is no set up center number, alarm information will only be displayed on the platform, if you have set the center number, alarm information will be sent SMS to the central number, platform will also keep record)

5.9.10. Convert 2d and 3d satellite map, please click

VI. Track on Web-based Manager account

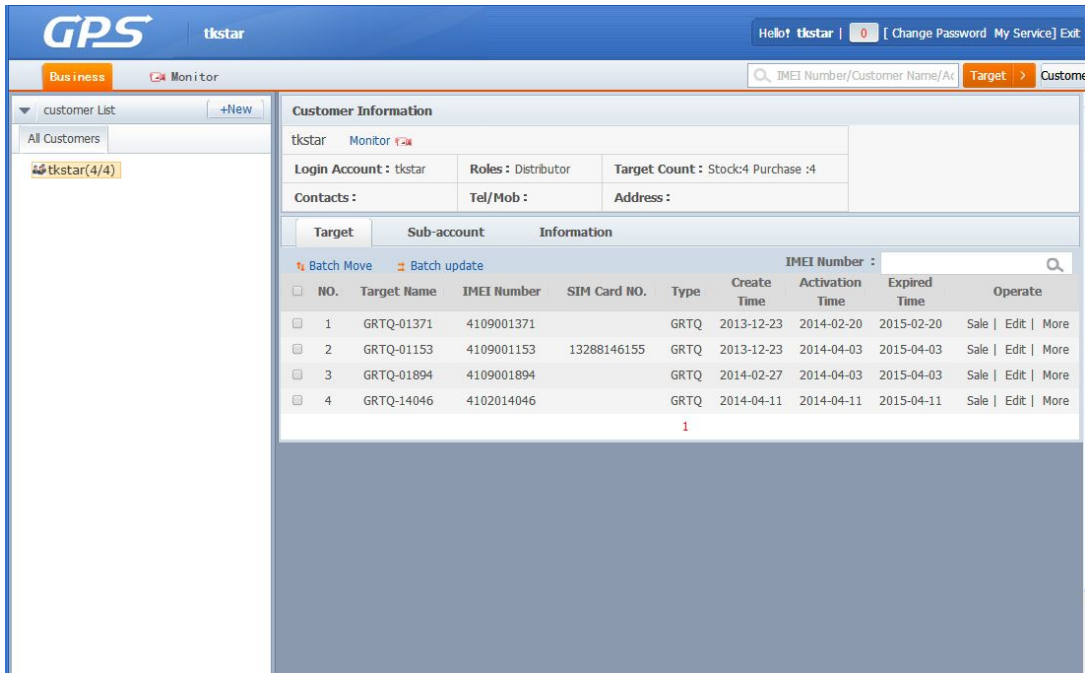
Management accounts are used to manage multiple trackers use account, when a tracker generally use IMEI landed

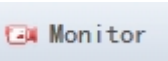
5.1



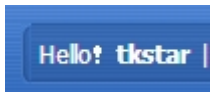
Platform : <http://www.tkstargps.net/>
Account. : Contact the seller to provide management account
Password: 123456

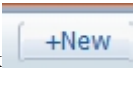
5.2 Account management functions

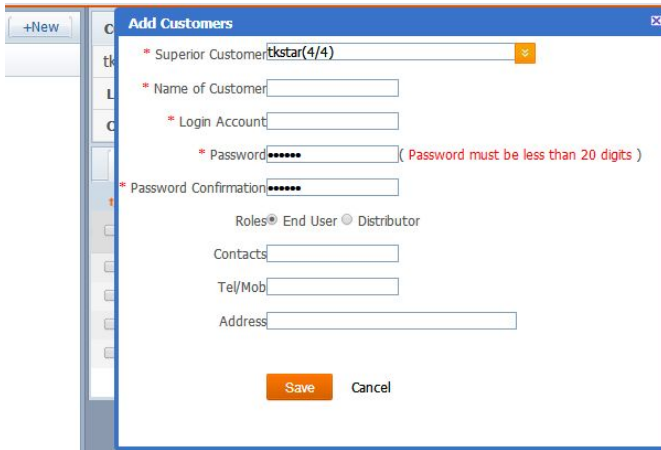


5.21 Monitoring location into the interface, please click  (Enter the monitoring interface instructions as IMEI landing operation, such as the above 4.9)

5.22 Edit account information and change time zones, please click



5.23 Create an account, please click , appear the interface for the following options



End user or Distributor (end user can only monitor positioning using the account, Distributor To create a account administrator account)

5.24 Move the IMEI number to the created account, choose IMEI please click , Appear below the interface to select the corresponding account

